

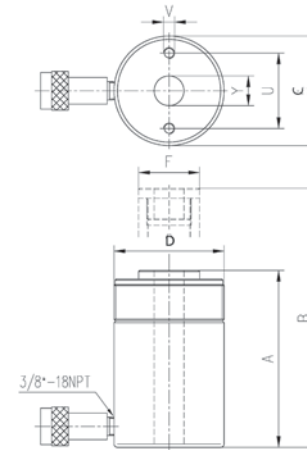
Features

1. Used in confined spaces
2. Complies to ASME B-30.1. High strength alloy steel for durability
3. Mounting holes for ease of fixture
4. Heavy duty plunger return springs
5. High quality 3/8-18NPT quick coupling
6. Grooved plunger end with threaded holes for mounting tilt saddles
7. Baked enamel finish for increased corrosion resistance



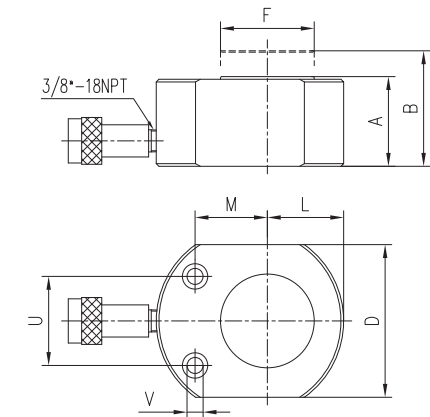
PSLH Specifications

Capacity @ 700 bar tonne	10	20	30	50	100
Stroke mm	38	44	62	60	57
Product Code	PSLH101	PSLH201	PSLH302	PSLH502	PSLH1002
Cylinder Effective Area cm ²	14.4	28.6	41.9	62.1	126.9
Oil Capacity cm ³	55	126	260	373	723
Collapsed Height A mm	88	99	118	122	141
Extended Height B mm	126	143	180	182	198
Outside Diametre D mm	69	92	102	124	164
Piston Rod Diametre F mm	38	51	66	70	92
Thread V	M4	M5	M4	M5	M8
Bolt Centres U mm	26	39.5	39.5	39.5	55.5
Weight kg	4.1	5.1	6.8	10.9	22.7



PSLC Specifications

Capacity @ 700 bar tonne	5	10	20	30	50	75	100	150
Stroke mm	6	12	11	13	16	16	16	16
Product Code	PSLC50*	PSLC100	PSLC200	PSLC300	PSLC500	PSLC750	PSLC1000	PSLC1500
Cylinder Effective Area cm ²	7	14.5	28.6	42	62.1	102.7	126.8	198.1
Oil Capacity cm ³	4.3	16	31	55	99	164	203	317
Collapsed Height A mm	33	43	52	59	67	80	86	100
Extended Height B mm	39	54	63	71	83	95	102	116
Outside Diametre D mm	59X42	83X56	101X76	117X95	140X114	165X139	178X153	215X190
Piston Rod Diametre F mm	25	38	51	66	70	83	92	115
M mm	21	34	39.6	44.5	54	66	74.5	82
L mm	25	28	40	48	57	69	76	95.5
Top of cylinder rod V mm	5.5	7	10	10	11	13.5	13.5	13.5
Bolt Centres U mm	28.5	36.5	49	52	66.5	76	76	117
Weight kg	1	1.4	3.1	4.5	6.8	11.4	14.5	26.3



* This part has a 1/4 NPT fitting and adapters are available upon request

The information contained in this brochure is to be used as a guide only, specifications are subject to change without notice.