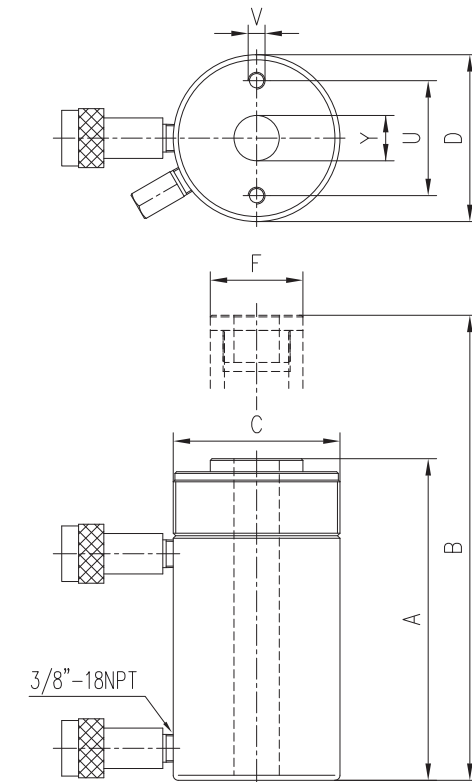


## Features

1. Hollow plunger design allows for both push and pull forces
2. Complies to ASME B-30.1. High strength alloy steel for durability and added safety
3. Double acting operation for controlled retraction
4. Built in safety valve prevents over-pressurisation
5. High quality 3/8-18NPT quick coupling
6. Collar threads, plunger threads for easy fixture
7. Baked enamel finish for corrosion resistance



## PDHC Specifications

Capacity @ 700 bar tonne	30		60			100				150
Stroke mm	178	258	89	166	257	38	76	153	257	203
Product Code	PDHC307	PDHC3010	PDHC603	PDHC606	PDHC6010	PDHC1001	PDHC1003	PDHC1006	PDHC10010	PDHC1508
Max Cylinder Capacity tonne	30		60			100				150
Advance	30		60			100				150
Retract	22.3		38.7			62				73
Cylinder Effective Area cm <sup>2</sup>	47.7		87.4			135.2				196.8
Advance	47.7		87.4			135.2				196.8
Retract	32.4		56.2			87.1				102
Oil Capacity Cm <sup>3</sup>	849		1231			778				1451
Advance	849		1231			778				1451
Retract	577		836			481				891
	577		836			481				891
	1388		331			662				1333
	1388		331			662				1333
	2239		3475			2074				
	2239		3475			2074				
Collapsed Height A mm	330	431	247	323	438	165	254	342	460	349
Extended Height B mm	508	689	336	489	695	203	330	495	717	552
Collar Thread C	4 1/2"-12		6 1/4"-12			5/8"-11				-
Outside Diametre D mm	114		159			212				247
Piston Rod Diametre F mm	65		92			127				152.5
Bolt Centres U mm	92		130			178				-
Thread V mm	3/8"-16		1/2"-13			5/8"-11				-
Thread Depth mm	15.5		14			19				-
Centre Hole Diametre Y mm	33.3		53.8			79.2				79.2
Weight kg	21	27	28	35	45	33	61	79	107	111

The information contained in this brochure is to be used as a guide only, specifications are subject to change without notice.